



Mobile Classroom

THE EARLY EDUCATION FOUNDATION, in partnership with TJ & PALS, is working to produce and distribute *a localized, affordable, interactive, educational programme that will bring effective mass preschool education to the underserved children of Southern Africa.*



The Early Education Foundation

A Section 18A Charitable Trust

Certified Socio-Economic B-BBEE Beneficiary

TJ & Pals South Africa

Using the latest interactive learning methodologies, TJ & Pals is working with leading preschool educators in South Africa to create a cost-effective, 2 year, "Mobile Classroom" *Full Curricula / Language Learning Early Childhood Educational Programme - especially localized and tailored for South Africa.*



This includes:

Covering the latest essential ECD CURRICULA STANDARDS

The option of children learning in English or Zulu*

Teacher training in English and Zulu

Adding localized South African relatable content

** Other SA languages are planned*

TJ's Unique Approach

Understanding the power of entertainment in education, TJ & Pals took ordinary creative objects that children use and play with, a pencil, a paintbrush, scissors, a ruler, an eraser and color markers, and developed them into *original animated characters that children can relate to, have fun and learn with - at the same time.*



English

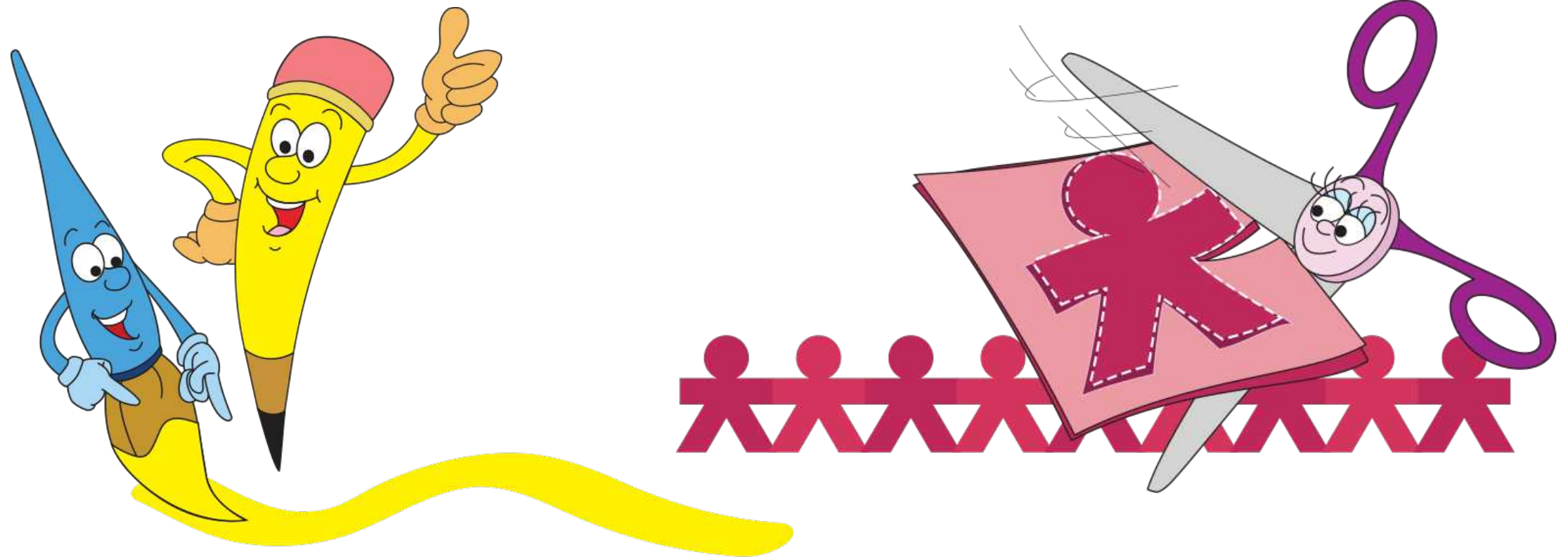


Zulu

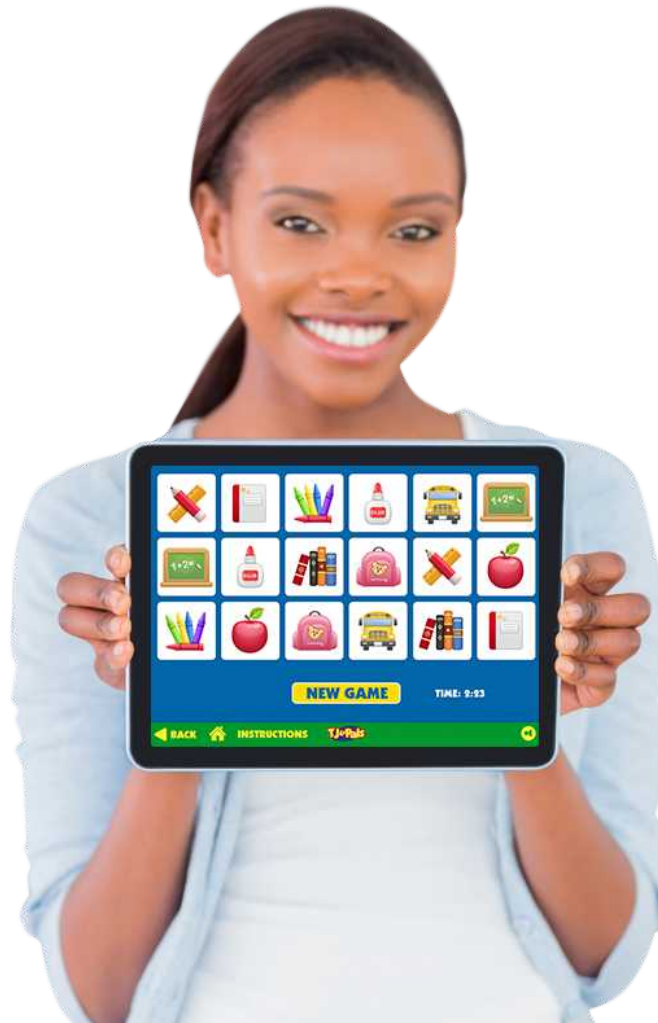
Learn as You Play

Learning through play inspires a natural love of learning and creativity in young children. It is critical to their education.

TJ & Pals unique, interactive, learning methodology is designed to help young children *explore, discover and effectively Learn as They Play.*



TJ's “Mobile Classroom” Advantage

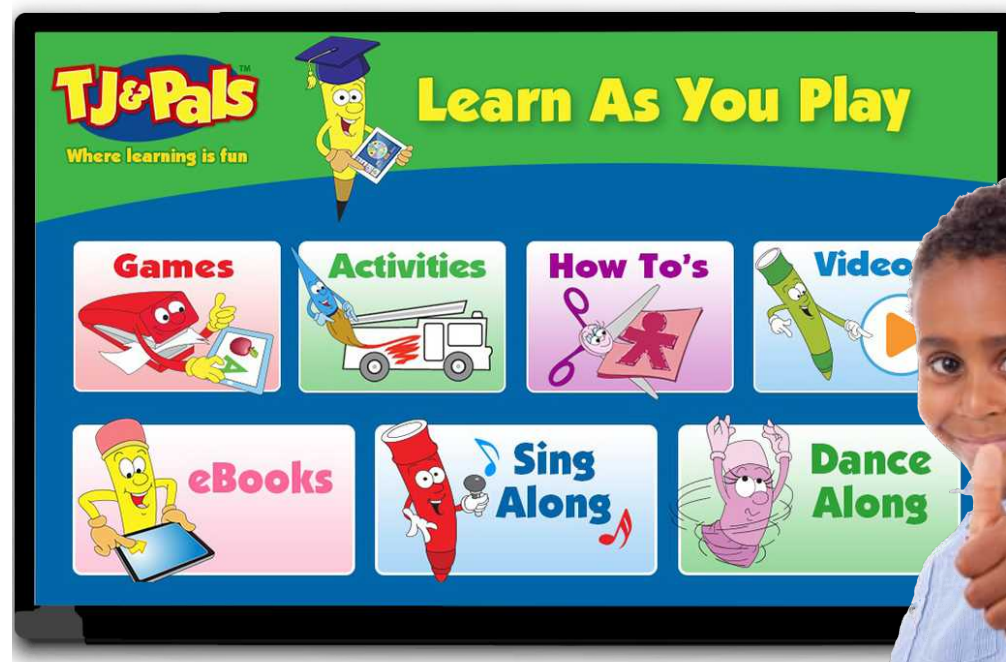


One trained facilitator, using one touchscreen tablet, pre-loaded with TJ & Pals' interactive and active educational programme, can help 25 young children, anywhere in South Africa, acquire all the basic preschool language, curricula and lifeskills they will need to succeed in their future.

Rural Distribution

In rural areas, where there may not be Internet access - or even electricity, TJ & Pals programs can run on:

- Touchscreen hardware that is preloaded with its interactive content - and can be easily updated - using micro SDHC cards. This means that remote, outlying preschools do not need the Internet to run TJ & Pals content.
- Inexpensive Solar Panel Power Systems to recharge the Touchscreen hardware overnight. This means that preschools that do not have electricity, can reliably run the hardware.



Active + Interactive Learning



As any experienced early childhood teacher knows it is essential to retain and combine traditional *active learning* (hands-on classroom and playground activities) with the new advances in *interactive learning* (touchscreen devices and smart screens).

In today's digital world, it is vital to create a holistic balance between active and interactive learning - *that's why TJ & Pals incorporates active learning options into every interactive lesson it creates.*



What Makes TJ & Pals Unique and Educationally Effective?

It *combines* interactive and active:

Learn English

Learn Zulu

and Preschool Curricula Learning

at the same time!

It also effectively enhances children's learning of *STEM, Cognitive and Spacial Skills, Literacy and Numeracy Skills, Emotional Development, as well as Social and Life Skills*

[CLICK TO SEE FULL PRESCHOOL CURRICULA](#)

Learning & Teaching Levels



TJ&Pals' *Learn English / Learn Zulu / Blended Curricula Programme* is divided into three age levels:

Level 1: Children ages 3 - 4 learn to speak basic English or Zulu *and* the Essential ECD Preschool Curricula Skills - through *games, songs, dancing, animated videos, stories* and *fun, hands-on individual and group activities*.

Level 2 : Children ages 4 - 5 , progress in in all the above - while improving their *vocabulary, basic reading and writing skills* through a higher level of interactivity -including *How-To's, eBooks*.

Grade R: An advanced level of all the above including teacher assisted, one-on-one and group English and speaking *role model activities*.

TJ's Teaching Options

Integrated Learning:

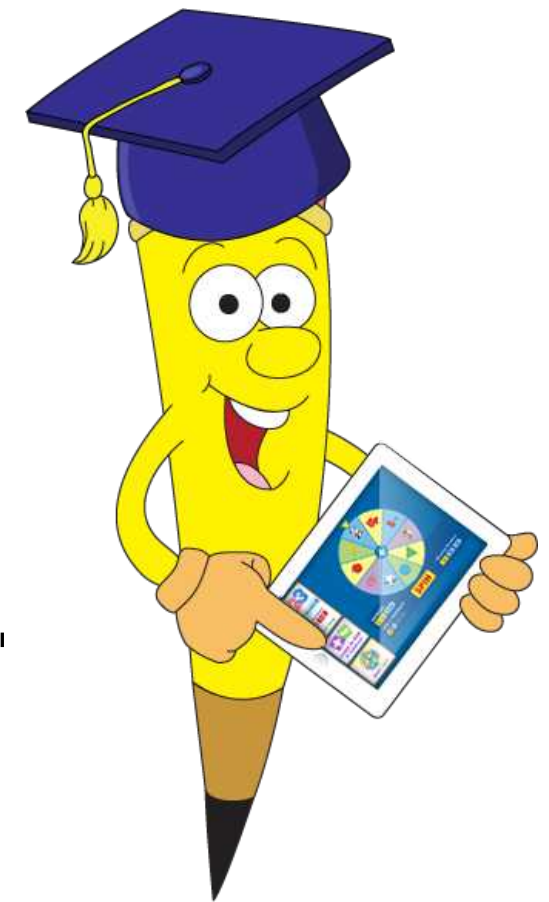
ECDs and Preschools can elect to *integrate* TJ&Pals' 2 year x 80 lesson program into their existing schedule. Each lesson has 5 subject options, which are designed to be repeated *multiple times* at the teacher's discretion.

Supplemental Learning:

For ECDs and Preschools that elect to use TJ's materials for *supplemental learning*, teachers can "pick and choose" content to suit their classes' individual needs.

Mobile Learning:

TJ's interactive "Mobile Classroom" is tailored for full curricula *Rural* and *Home Schooling*, *Individual* or *Group Extra Curricula Learning*.



[CLICK TO SEE EDUCATOR'S REVIEWS](#)

Special Education

TJ & Pals fun, easy-to-use Interactive Programming
is especially effective for children with special needs

QUOTE:

“For the last 18 months we have been using TJ & Pals interactive games and activities in our online, special education, visual speech therapy program for children. The games are superbly designed, flawlessly engineered and expertly tailored to our needs.”

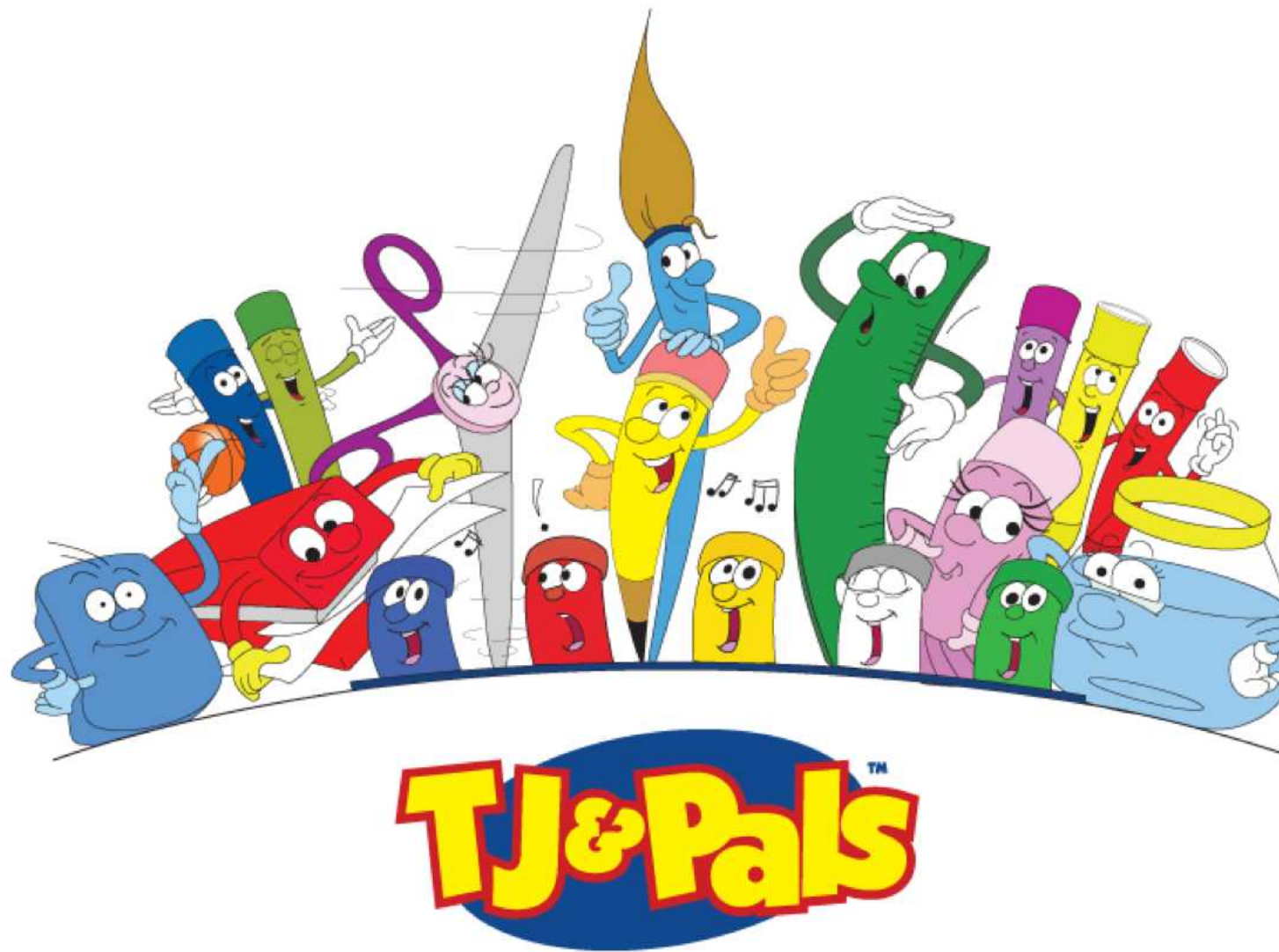
We highly recommend TJ & Pals to anyone interested in making education more fun, engaging and effective - especially for children with special needs”

Jeremy Glauser

Director of Operations

www.vsttherapy.com





Where Learning is Fun



The Early Education Foundation

www.earlyedfoundation.org